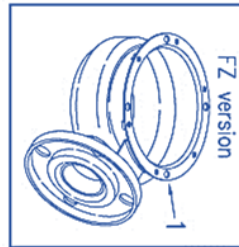
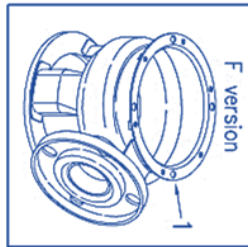
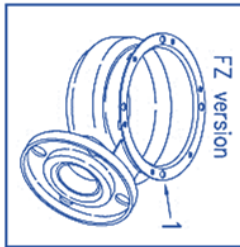
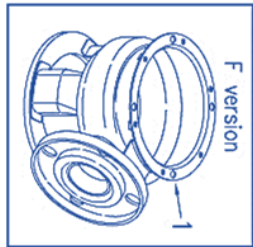
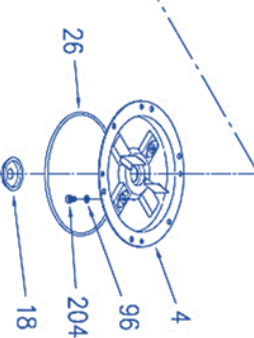
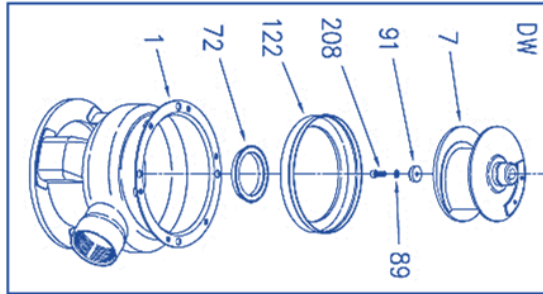
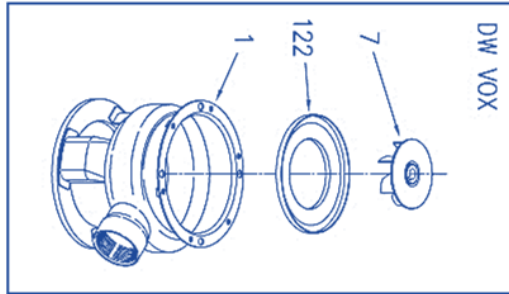
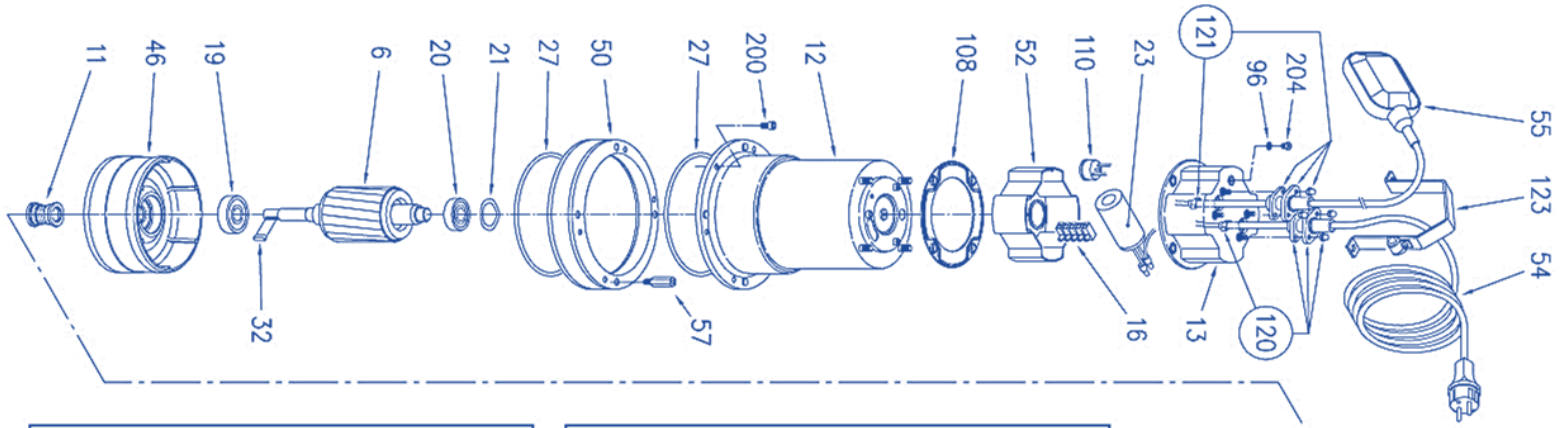


نقشه انفجاری DW



											DIS. ROSA	DESCRIZIONE	N° DISEGNO								
											NORM.			DW - DW VOX	01357						
REV	DESCRIZIONE DELLA MODIFICA				N° MOD.	DIS.	CONTR.	R&D	NORM.	DATA		DATA 10.10.2001	<table border="1"> <tr> <td>R</td> <td>A</td> <td></td> <td></td> </tr> <tr> <td>V</td> <td></td> <td></td> <td></td> </tr> </table>	R	A			V			
R	A																				
V																					



DW (F-FZ) 1~

Pos	Part Name	M75	M75 A	M100	M100A	M 150	M 150 A
001	Casing DW				251420699		
001	Casing DWF				251420988		
001	Casing DWFZ				251420989		
004	Casing Cover				251438022		
006	Shaft with rotor	275412261		275412262		275412263	
007	Impeller	251450901		251450902		251450903	
011-k	Mechanical seal				364500015		
012	Motor frame	277930261		277930262		277930263	
013	Motor cover	241425081	241425082	241425081	241425082	241425081	241425082
016	Terminal board	365993000	365993001	365993000	365993001	--	--
018	Mech.seal protection				271473031		
019-k	Bearing				364500015		
020-k	Bearing				364500015		
021-k	Adjusting ring				364500015		
023	Capacitor	361401200		361404250		364500015	
026-k	O ring				364500015		
027-k	O ring				364500015		
032-k	Key				364500015		
046	Bearing housing				240080578		
052	Terminal insulating box				372582020		
054	Power cable	367900007		367900013		367900013	
055	Flout switch	---	365231006	---	365231006	--	365231006
072-k	Casing ring				364500015		
089-k	Washer				364500015		
091-k	Washer				364500015		
096-k	O ring				364500015		
108	Cover gasket				364747022		
110	protector					369450020	
110	Protector					369450510	
120	Cable connector kit power	352665014			352665021		
121	Cable connector kit flout	--	352665014	--	352665014	--	352665014
122	Impeller protection ring		271473027			271473028	
123	Handle				251460022		
131	Support for motor protector					372581158	
133	Probe for protector					272581154	
134	cover					372524028	
200	Screw				369644000		
204	Screw				369640002		
208-k	screw				364500015		



DW (F-FZ) 3~

Pos	Part Name	75	100	150	200	300
001	Casing DW			251420699		
001	Casing DWF			251420988		
001	Casing DWFZ			251420989		
004	Casing Cover			251438022		
006	Shaft with rotor	275412271	275412272	275412273	275412274	275412259
007	Impeller	251450901	251450902	251450903	251450904	251450926
011-k	Mechanical seal			364500015		
012	Motor frame	277930260	277930261	277930262	277930263	277930267
013	Motor cover			241425081		
016	Terminal board		365993002			--
018	Mech.seal protection			271473031		
019-k	Bearing			364500015		
020-k	Bearing			364500015		
021-k	Adjusting ring			364500015		
026-k	O ring			364500015		
027-k	O ring			364500015		
032-k	Key			364500015		
046	Bearing housing		240080578			240080575
050	Spacer	--	--	--	--	240016022
052	Terminal insulating box			372582020		
054	Power cable			367931056		
057	Spacer	--	--	--	--	275416026
072-k	Casing ring			364500015		
089-k	Washer			364500015		
091-k	Washer			364500015		
096-k	O ring			364500015		
108	Cover gasket			364747022		
120	Cable connector kit power	352665020		352665021		352665020
122	Impeller protection ring	271473027		271473028		271473034
123	Handle			251460022		
200	Screw		369644000			369641045
204	Screw			369640002		
208-k	screw			364500015		



DW (F-FZ) VOX 1~

Pos	Part Name	M75	M75A	M100	M100A	M150	M150A
001	Casing DW			251420699			
001	Casing DWF			251420988			
001	Casing DWFZ			251420989			
004	Casing Cover			251438022			
006	Shaft with rotor	275412261		275412262		275412263	
007	Impeller	251450912		251450913		251450914	
011-k	Mechanical seal			364500015			
012	Motor frame	277930261		277930262		277930263	
013	Motor cover	241425081	241425082	241425081	241425082	241425081	241425082
016	Terminal board	365993000	365993001	365993000	365993001	--	--
018	Mech.seal protection			271473031			
019-k	Bearing			364500015			
020-k	Bearing			364500015			
021-k	Adjusting ring			364500015			
023	capacitor	361401200		361404250		361401315	
026-k	O ring			364500015			
027-k	O ring			364500015			
032-k	Key			364500015			
046	Bearing housing			240080578			
052	Terminal insulating box			372582020			
054	Power cable	367900007			367900013		
055	Flout switch	--	365231006	--	365231006	--	365231006
089-k	Washer			364500015			
091-k	Washer			364500015			
096-k	O ring			364500015			
108	Cover gasket			364747022			
110	protector					369450020	
110	Protector					369450510	
120	Cable connector kit power	352665014			352665021		
121	Cable connector kit flout	--	352665014	--	352665014	--	352665014
122	Impeller protection ring		271473026			--	271473028
123	Handle			251460022			
131	Support for motor protector					372581158	
133	Probe for protector					272581154	
134	Cover					372524028	
200	Screw			369644000			
204	Screw			369640002			
208-k	screw			364500015			



DW (F-FZ) VOX 3~

Pos	Part Name	75	100	150	200	300
001	Casing DW			251420699		
001	Casing DWF			251420988		
001	Casing DWFZ			251420989		
004	Casing Cover			251438022		
006	Shaft with rotor	275412271	275412272	275412273	275412274	275412259
007	Impeller	251450912	251450913	251450914	251450915	251450930
011-k	Mechanical seal			364500015		
012	Motor frame	277930260	277930261	277930262	277930260	277930267
013	Motor cover			241425081		
016	Terminal board			365993002		
018	Mech.seal protection		271473031			--
019-k	Bearing			364500015		
020-k	Bearing			364500015		
021-k	Adjusting ring			364500015		
026-k	O ring			364500015		
027-k	O ring			364500015		
032-k	Key			364500015		
046	Bearing housing		240080578			240080575
050	spacer	--	--	--	--	240016022
052	Terminal insulating box			372582020		
054	Power cable			367931056		
057	Spacer	--	--	--	--	240016026
089-k	Washer			364500015		
091-k	Washer			364500015		
096-k	O ring			364500015		
108	Cover gasket			364747022		
120	Cable connector kit power	352665014		352665021	352665020	
122	Impeller protection ring	271473026	--	--	--	--
123	Handle			251460022		
200	Screw		369644000			369641045
204	Screw			369640002		
208-k	screw			364500015		

