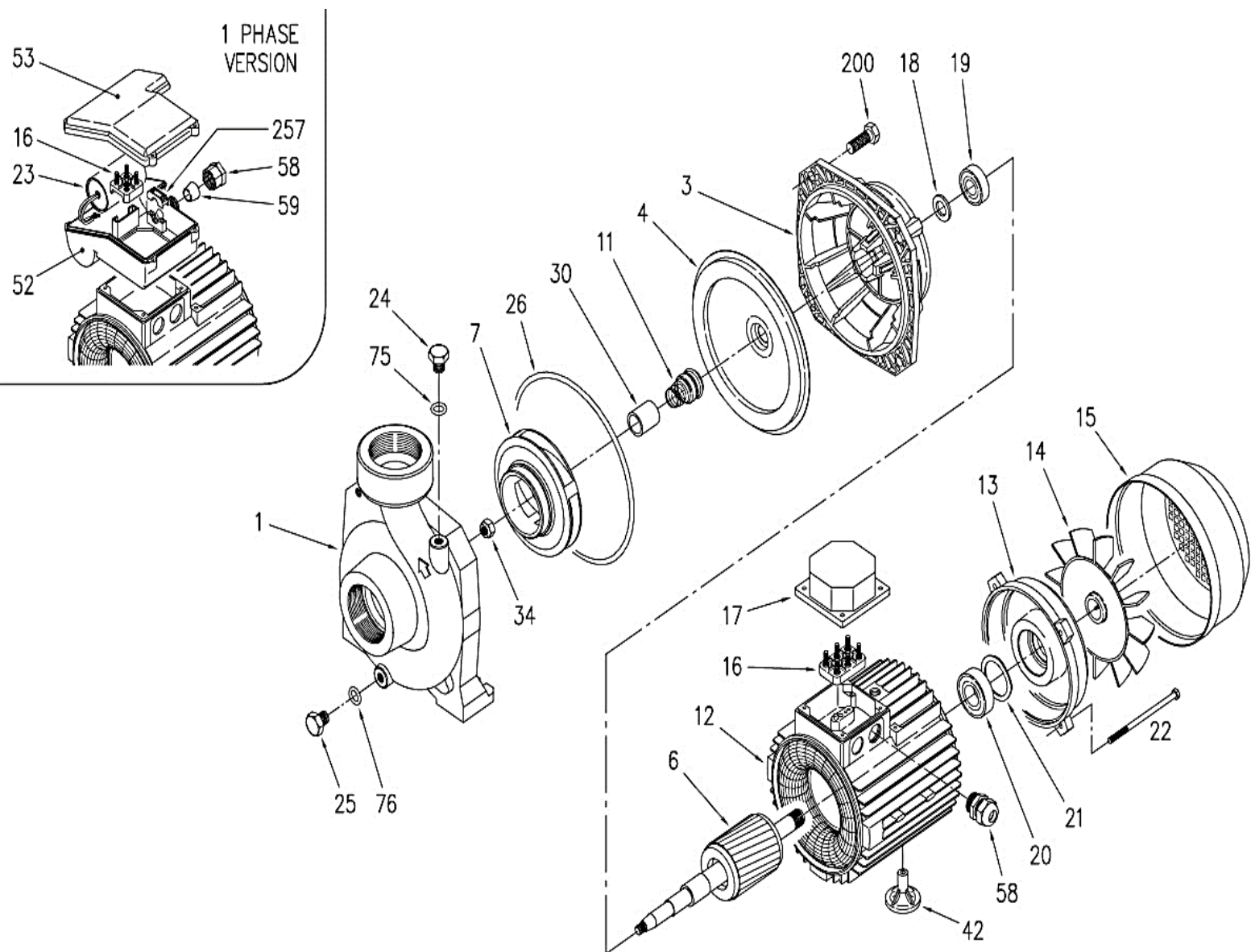


نقشه انفجاری الکتروپمپ تک پروانه CMC



CMC 1~ 50HZ

Pos	Part name	0.75 M	1.00 M
		1180090000	1180100000
001	Casing		240020006
003	Motor bracket		240280001
004	Casing cover		241438000
006	Shaft with rotor	275412713	275412717
007	Impeller	240050704	240050004
011-K	Mechanical seal fix		364500013
011-K	Mechanical seal roll		364500013
012	Motor frame	2779300008	277930011
013	Motor cover		230225501
014	Fan		369950002
015	Fan cover		362250002
016	Terminal board		365940253
018-K	Splash ring		364500013
019	Bearing		360306202
020	Bearing		360306202
021	Adjusting ring		360600035
022	Tie rod		369305135
023	Capacitor	361400140	361402200
024	Priming plug		375192000
025	Drain plug		375192000
026-K	O – ring		364500013
030-K	Mechanical seal spacer		364500013
032-K	Key		364500013
034-K	Impeller nut		342572001
042	Key		363200500
053	Capacitor box cover		363201100
058	Cable entry		363201200
059	Conic gasket		363201300
075-K	Washer		364500013
076-K	Washer		364500013
200	Screw		369600005
257	Wire clamp		366550011



CMC 3~ 50HZ

Pos	Part name	075 T	1.00 T
		1180090004	1180100004
001	Casing		240020006
003	Motor bracket		240280001
004	Casing cover		241438000
006	Shaft with rotor	275412713	275412717
007	Impeller	240050704	240050004
011-K	Mechanical seal fix		364500013
011-K	Mechanical seal roll		364500013
012	Motor frame	277930161	277930411
013	Motor cover		230225501
014	Fan		366950002
015	Fan cover		362250002
016	Terminal board		365940256
017	Terminal box cover		363232030
018-K	Splash ring		364500013
019	Bearing		360306202
020	Bearing		360306202
021	Adjusting ring		360600035
022	Tie rod		369305135
024	Priming plug		375192000
025	Drain plug		375192000
026-K	O – ring		364500013
030-K	Mechanical seal spacer		364500013
034-K	Impeller nut		364500013
042	Foot		342572001
058	Cable entry		366550010
075-K	Washer		364500013
076-K	Washer		364500013
200	Screw		369600005
257	Wire clamp		366550011

