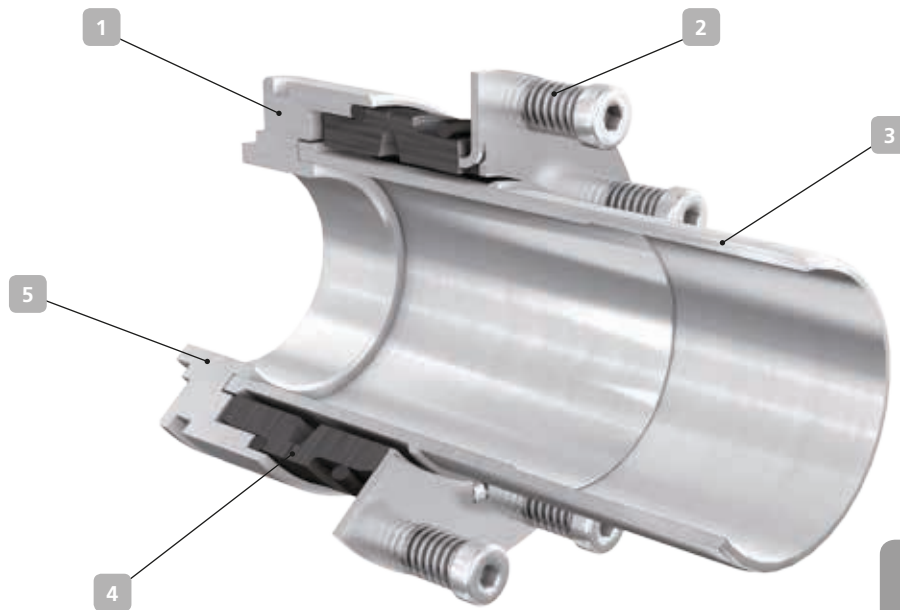


4K – for KSB's KWP type series



Applications:
waste water containing stringy material and abrasive particles

1 Robust

Single mechanical seal, bi-directional, tailored to the seal installation space of the pump. Suitable for fluids with high solids content.

2 Dependable

Stationary design, balanced, multiple springs located outside the fluid handled. The large springs are insensitive to contamination and provide uniform surface pressure across the seal faces, thus ensuring a long service life.

3 Versatile

Can optionally also be operated with unpressurised quench liquid.

4 Different material variants

Primary and mating rings made of silicon carbide or, as special variant, tungsten carbide springs made of 1.4310, alternatively available made of Hastelloy as special variant.

5 Service-friendly

Easy to install, no adjustments required when installing.

Technical description

Design	Single mechanical seal
Type	Stationary, balanced
Springs	Multi-spring arrangement
Direction of rotation	Bi-directional
Additional information	Various wear part kits available, see ZN3302

Materials

Primary ring	SiC (Q1) / U as special variant
Mating ring	SiC (Q1) / U as special variant
Elastomers	EPDM (E) / FKM (V) / FFKM (K) / FEP-coated (M1)
Springs	1.4571 (G) / 2.4610 (M)
Other Components	1.4462 (G1) / 1.4539 (G3) / 1.4501 (G4)

Other material combinations on request

Technical data

Operating pressure	Up to 25 bar, dynamic Up to 37.5 bar, static
Temperature	-20 °C to 150 °C
Bearing bracket (seal size)	P03ax (040), P04ax (050), P05ax (060), P06x (070), P08sx (080), P10ax (100), P12sx (120)
Business type	Standard (KSB EasySelect)