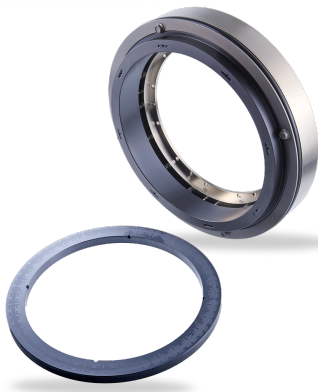


RELY ON EXCELLENCE

NF941

Mechanical seals | Compressor seals | Gas-lubricated seals



Features

- Single seal with double seal function
- Non-contacting from static to high speed condition
- Balanced
- Bi-directional
- Stationary multiple springs

Advantages

- Wear-free and contact-free operation
- Prevents the ingress of foreign particles

Operating range

Pressure: $p = 5 \text{ bar (73 PSI)}$

Temperature:

$t = -20 \text{ °C ... } +200 \text{ °C (-4 °F ... } +392 \text{ °F)}$

Sliding velocity: $v_g = 60 \text{ m/s (197 ft/s)}$

Materials

Seal face: High-density carbon graphite

Seat: Ductile stainless steel with TiN-coating or silicon carbide

Secondary seals: FKM

Metal parts: CrNiMo steel

Notes

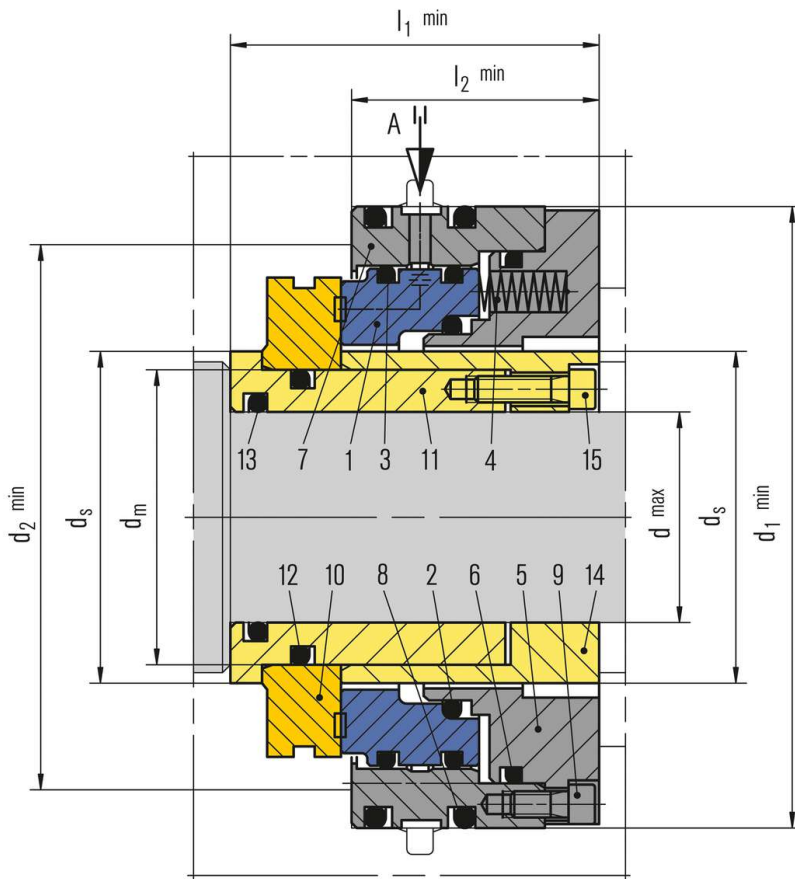
Seals from the NF941 series are used in screw compressors for special applications. They are hybrid seals that seal both aerostatically and aerodynamically. The separation gas is routed through holes in the stationary seal ring directly between the seal faces, while the lift-off is caused by specially designed gas grooves.

Dimensions on request.

Recommended applications

- Process industry
- Single wafer cleaning systems
- Dry screw compressors
- Blowers
- Agitators

RELY ON EXCELLENCE



Item	Description
1	Seal face
2, 3, 6, 8, 12, 13	O-Ring
4	Spring
5	Adapter
7	Housing
9, 15	HSH cap screw
10	Seat
11	Shaft sleeve
14	Clamp sleeve
A	Seal gas supply

eagleburgmann.com
info@eagleburgmann.com

All technical specifications are based on extensive tests and our many years of experience. The diversity of possible applications, however, means that they can serve only as guide values.

We must be notified of the exact conditions of application before we can provide any guarantee for a specific case. This is subject to change.